



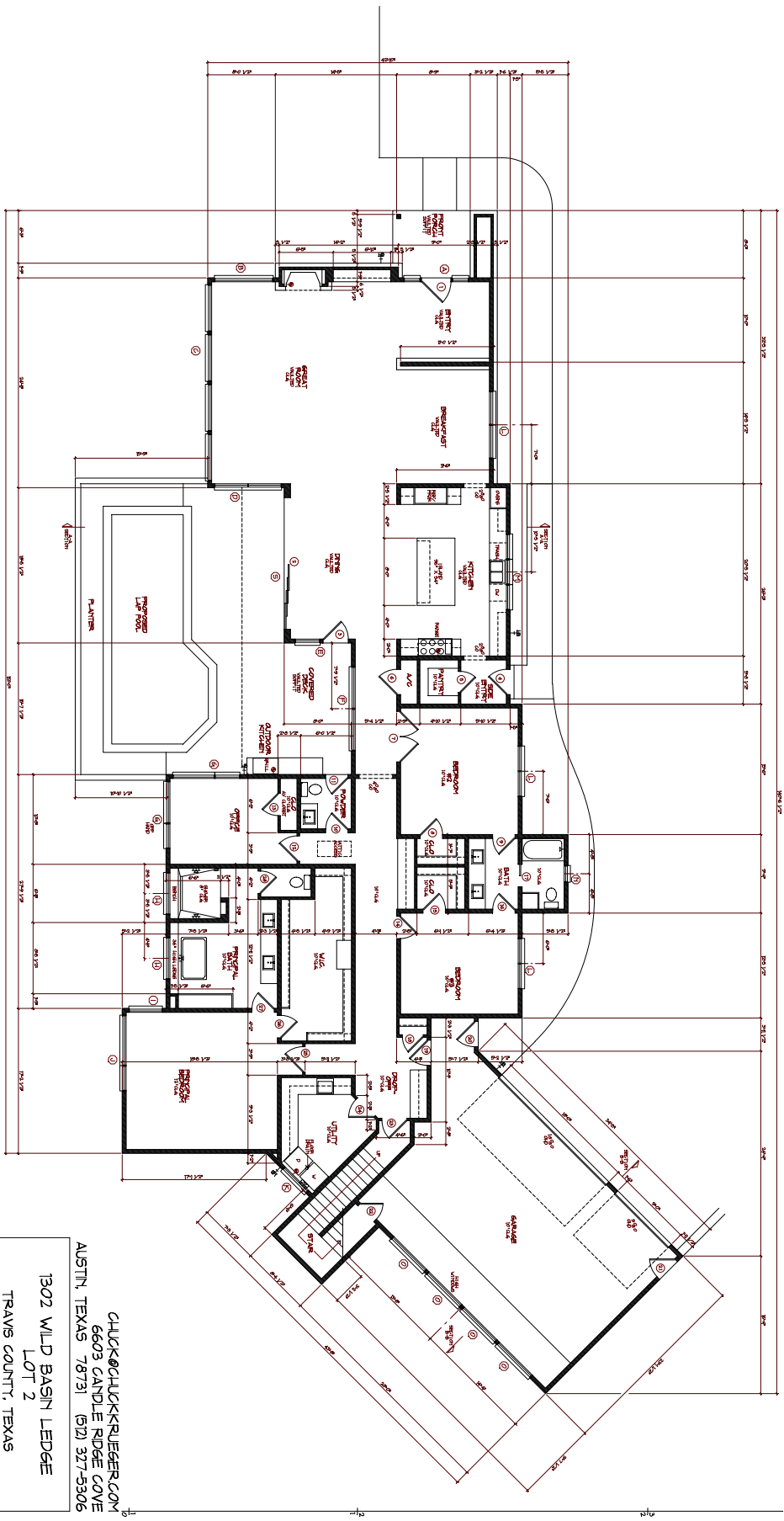
PRELIMINARY
NOT FOR CONSTRUCTION

CHUCK@CHUCKKRUEGER.COM
6603 CANDLE RIDGE COVE
AUSTIN, TEXAS 78731 (512) 317-5306

1302 WILD BASIN LEDGE
LOT 2
TRAVIS COUNTY, TEXAS

REVISIONS	DATE	BY
	08/13/25	CKR
	08/25/24	

A-1
ARCHITECTURAL



PRELIMINARY
NOT FOR CONSTRUCTION

1ST FLOOR PLAN
3/16/10 3666 SQ FT

REVISIONS	DATE 09/13/23
	JOB # 23-04
	A-2
	ARCHITECTURAL

CHUCK@CHUCKKRUEGER.COM
6603 CANDLE RIDGE COVE
AUSTIN, TEXAS 78731 (512) 327-5306

1302 WILD BASIN LEDGE
LOT 2
TRAVIS COUNTY, TEXAS

